

# RF SOURCE TAGGING

Enhanced security  
for hard goods

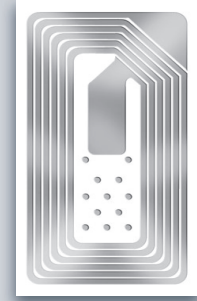


Checkpoint's RF-EAS Source Tagging technology offers a wide range of solutions for hard goods of all kinds. With unmatched experience in RF circuit development and placement, Checkpoint provides a smooth start-up for your Source Tagging program.

## HIGHLIGHTS

- Easy application of paper-thin RF-EAS labels
- Standard and custom formats for a wide variety of products
- Invisible integration leaves packaging uncompromised
- Product placement evaluation
- On-site support/product line certification

# RF SOURCE TAGGING



## PAPER-THIN RF LABELS OFFER MAXIMUM PLACEMENT FLEXIBILITY

Mass-produced in multi-billion quantities, Checkpoint's RF tags provide the widest range of tagging solutions for packagers and manufacturers. Our paper-thin RF labels do not impact carton feeding. Tags are designed to maximize manufacturing efficiencies and can be applied automatically in a variety of locations:

- Within or on the product itself
- Inside product packaging
- Beneath a product's primary label
- Seamlessly integrated into a hang tag, wrap tag or other packaging formats

In order to keep pace with new packaging designs, Checkpoint is always developing new circuit designs to optimize packaging applications. Recent innovations include Checkpoint's new Enhanced Performance (EP) labels. Our EP labels' smaller

sizes increase label placement tolerance while offering a more environmentally friendly solution for source-tagged packaging. The labels' design uses less aluminium, less paper and less plastic than traditional labels.

## COUNT ON CHECKPOINT FOR SOLID SUPPORT

With more than 40 years of experience in the design, manufacture and application of RF labels, Checkpoint is the ideal Source Tagging partner. Services include:

- Source Tagging Competency and Evaluation Centers situated in the United States, Canada, Hong Kong, Japan, Singapore, Australia, Argentina, Germany, Spain and the United Kingdom
- Engineering analysis of products/packages to determine optimal tag placement
- Make-ready program to help you define your Source Tagging requirements

- On-site support for equipment and process certification and initial production runs

## CALL CHECKPOINT TO SIMPLIFY SOURCE TAGGING

To discuss developing a Source Tagging program, contact your Checkpoint Trade Development Manager, or call the Source Tagging Information Center at 800 257 5540, ext. 2322. You can also email us at [sourcetagctr@checkpoint.com](mailto:sourcetagctr@checkpoint.com).

