

EP LABELS

*Security that always
fits your needs*

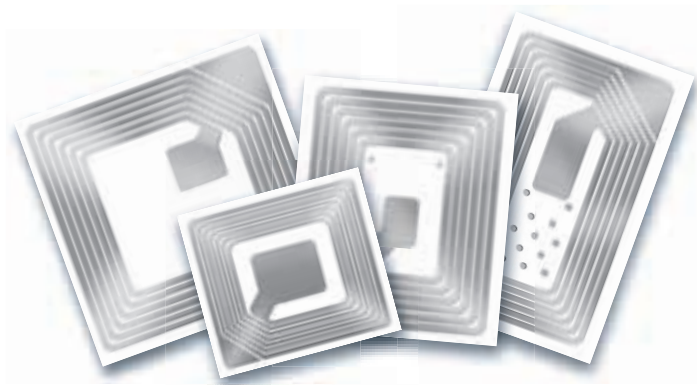


A QUANTUM LEAP IN EAS LABELING TECHNOLOGY

Discover first-class product protection

Checkpoints has continuously introduced improvements in EAS labels throughout the company's 40-year history, and the newest Enhanced Performance (EP) labels are the greatest evolution in EAS labeling technology yet. Using advanced material science and RF circuit design, EP labels give our customers exactly what they want – smaller labels with greater detection capabilities.

Once again Checkpoint has raised the bar on RF label performance standards with the introduction of the industry-leading EP label line. This new product line offers the smallest, hottest labels on the market. EP labels have been specifically designed to fit all of your application needs, including CPG packaging, cosmetics, electronics and apparel, to highlight a few. The labels can be used for high-speed automatic applications, custom prints, thermal transfer printing and unique integrations.



As the highest performing line of labels on the market, EP labels offer smaller sizes with superior detection. Now you can find the perfect label to protect products of all shapes and sizes.

The 410 EP label offers similar performance to the 310 label, but is significantly smaller in size. Ideal for most applications, including high-speed automatic application, “technology inside” and unique, RF integrated products.



The 710 EP label outperforms standard 410 labels by 25 percent and 710 labels by 60 percent. The 710 EP label enables increased detection and reduced size. It is ideal for most applications, including high-speed automatic application, “technology inside” and unique, RF-integrated products.

The new 2410 PST EP is the world's smallest, fully functional RF label. It is flexible and has been designed for in-store labeling and dispensing with a Checkpoint hand labeling tool. In short: the new EP PST label combines simple labeling and maximum security.

Checkpoint's newest health and beauty care (HBC) solution is the 2815 EP label. This label is ideal for almost all applications and offers a unique, slender profile. It opens up the possibility to tag SKU's that previously couldn't be tagged. It's also ideal for apparel labeling solutions such as pocket tags and woven loop integrations.

HOTTER, SMALLER, SHARPER, SAFER

EP labels deliver industry-changing advantages:



The 710 EP label outperforms standard 410 labels by 25 percent

- Hotter – *Up to 60% increases in detection; ability to increase EAS system aisle widths by as much as 35%
- Smaller – Smaller size enables tagging of more SKU's and works with unique integrations
- Sharper – Reduces false alarms
- Safer – Will not reactivate
- Shrink Down! – Outstanding detection, de-activation and unique integration capabilities allow for endless product protection options

* % varies depending on system type

410 EP PSG Auto Apply ★★★

Frequency: 8.2 MHz
Size: 41 mm x 41 mm;
1.61 inch x 1.61 inch
Enables wider aisles – maintains 410 size

710 EP PSG Auto Apply ★★★

Frequency: 8.2 MHz
Size: 34 mm x 41 mm
1.33 inch x 1.61 inch
Enables tagging of more SKU's, without losing performance

2410 EP PST ★★★

Frequency: 8.2 MHz
Size: 28 mm x 32 mm
1.1 inch x 1.25 inch
Smallest functional RF label – makes tagging of small SK U's possible

2815 EP PSG Auto Apply ★★★

Frequency: 8.2 MHz
Size: 24 mm x 50 mm
0.94 inch x 2.00 inch
Ideal for health and beauty care applications



Checkpoint Systems is the leading supplier of shrink management solutions. Checkpoint's global team partners with retailers to reduce theft, achieve operational excellence, increase inventory visibility and provide customers with greater merchandise availability through a combination of advanced RF technology, a broad merchandise protection program, added-value software and real-time labeling solutions.



Electronic Article Surveillance



Source Tagging



High-Theft Solutions



Shrink Management Software



RFID



Check-Net Labeling Services

US
Tel: 800 257 5540 or 856 848 1800
marketingleads@checkpt.com
info@checkpt.com (For CheckPro Manager only)

ASIA PACIFIC
Tel: 852 2527 2327
asiapac.marketing@checkpt.com

EUROPE
Tel: 34 91 432 2504
european.marketing@eur.checkpt.com